

VIBRATION MOTOR

Open a new era for intelligent vibration motor

Anytime and anywhere Meeting your needs

Motodrives Vibration Motor

World leader in intelligent vibration and control test technologist



POWERMAX PLUS CO.,LTD.

Address
48/15 Moo.13 Raikhing Samphran Nakronpathom 73210 (Thailand)
TEL :+66(0)2-408-1000 MOBILE : +66 (0)92-4789192
www.powermaxplus.co.th
E-mail:sales@powermaxplus.co.th

Line Official Account



Facebook Fanpage



Youtube Channel



www.powermaxplus.co.th

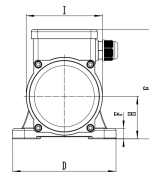


MV Standard Range

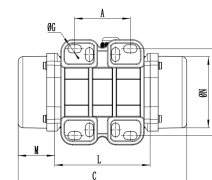
2 Poles 3000/3600 RPM

Temp.Class: 100 135

*Terminal Connections: High Voltage; Low Voltage



Frame 10



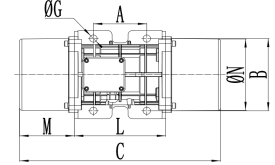
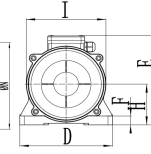
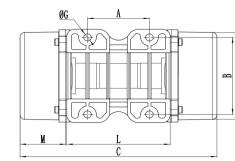
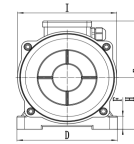
Frame 20

Wm (kgcm)		Model		Centrifugal Force (Kg)		Weight (Kg)	Input Power (kW)		Standard Nominal Current (A)		*Terminal Connection	Ia/In		Cable Gland
50Hz	60Hz	50Hz	60Hz	50Hz	60Hz	50Hz-60Hz	50Hz	60Hz	50Hz (400V)	60Hz (460V)		50Hz	60Hz	Metric
1.3	1.0	MV60/3-10	MV60/36-10	66	71	4	0.09	0.09	0.25	0.23	Y	3.2	3.2	M16
2.0	1.3	MV100/3-10	MV100/36-10	98	95	5	0.09	0.09	0.25	0.23	Y	3.2	3.2	M16
3.7	2.6	MV200/3-20	MV200/36-20	187	189	7	0.15	0.18	0.35	0.30	Y	3.5	3.5	M20
3.7	2.6	MV200/3-23	MV200/36-23	187	189	7	0.15	0.18	0.35	0.30	Y	3.5	3.5	M20
6.4	4.5	MV300/3-30	MV300/36-30	321	323	10	0.25	0.28	0.52	0.45	Y	3.8	3.7	M20
8.0	5.7	MV400/3-30	MV400/36-30	407	411	10	0.27	0.33	0.58	0.60	Y	3.7	3.7	M20
10.3	7.4	MV500/3-40	MV500/36-40	530	534	16	0.50	0.58	0.96	0.97	Y	4.2	4.4	M20
14.9	10.6	MV700/3-40	MV700/36-40	758	765	17	0.59	0.61	1.25	1.30	Y	4.5	5.2	M20
15.7	11.1	MV800/3-50	MV800/36-50	794	800	20	0.70	0.84	1.45	1.50	Y	4.0	4.0	M20
20.3	14.0	MV1200/3-50	MV1200/36-50	1005	1013	21	0.95	1.15	1.85	1.95	Y	4.6	4.7	M20
26.6	18.6	MV1300/3-50	MV1300/36-50	1355	1365	22	1.30	1.38	2.44	2.53	Y	5.4	5.2	M20
31.3	22.2	MV1600/3-60	MV1600/36-60	1601	1608	51	1.54	1.60	2.94	3.00	Y	6.1	6.4	M25
36.8	27.6	MV2000/3-60	MV2000/36-60	2027	1997	52	2.10	2.10	3.75	3.83	Y	6.7	6.6	M25
46.0	31.9	MV2300/3-60	MV2300/36-60	2302	2306	53	2.40	2.45	4.44	4.51	Y	6.2	6.5	M25
68.1	43.9	MV3200/3-75	MV3200/36-75	3252	3176	103	2.76	2.90	5.30	5.40	Y	8.5	8.4	M32
79.4	56.0	MV4000/3-75	MV4000/36-75	4033	4052	107	2.90	2.90	5.30	5.40	Y	8.7	9.9	M32
103.2	69.8	MV5000/3-75	MV5000/36-75	5009	5048	111	4.00	4.00	7.22	7.30	Y	8.7	10	M32
129.6	90.5	MV6500/3-85	MV6500/36-85	6510	6552	228	5.23	5.50	9.43	9.50	△	8.7	9	M32
179.6	129.6	MV9000/3-85	MV9000/36-85	9025	9375	240	9.50	9.30	17.80	18.00	△	8.6	8.8	M32
129.6	90.5	MV6500/3-86	MV6500/36-86	6510	6552	228	5.50	6.30	9.50	9.50	△	8.2	7.7	M32
179.6	129.6	MV9000/3-86	MV9000/36-86	9025	9375	240	6.60	7.70	11.50	11.50	△	8.2	8.2	M32

Model		A	B	ØG	C	M	D	E	F	H	I	L	N	Holes n°	Size
50Hz	60Hz				50Hz-60Hz	50Hz-60Hz									
MV60/3-10	MV60/36-10	Multiple Footprint 62-74 106 10 33 83-102 10			213	45	130	135	12	50	96	107	85	4	10
MV100/3-10	MV100/36-10	Multiple Footprint 62-74 106 10 33 83-102 10			213	45	130	135	12	50	96	107	85	4	10
MV200/3-20	MV200/36-20	62-74	106	9	233	54	131	154	15	65	125	120	112	4	20
MV200/3-23	MV200/36-23	Multiple Footprint 62-74 106 11 65 140 14.5 115.5 135 11 134.5 115 11			217	50	165	140	25	82	116	160	110	4	23
MV300/3-30	MV300/36-30	Multiple Footprint 80 110 11 90 125 13 124 110 11 135 115 12			250	45	155	173	19	79	150	160	134	4	30
MV400/3-30	MV400/36-30	Multiple Footprint 80 110 11 90 125 13 124 110 11 135 115 12			276	58	155	173	19	79	150	160	134	4	30
MV500/3-40	MV500/36-40	105	140	13	334	78	168	196	22	92	169	178	158	4	40
MV700/3-40	MV700/36-40	105	140	13	334	78	168	196	22	92	169	178	158	4	40
MV800/3-50	MV800/36-50	120	170	17	321	58	208	210	22	96	185	205	170	4	50
MV1200/3-50	MV1200/36-50	120	170	17	321	58	208	210	22	96	185	205	170	4	50
MV1300/3-50	MV1300/36-50	120	170	17	321	58	208	210	22	96	185	205	170	4	50
MV1600/3-60	MV1600/36-60	140	190	17	416	80	229	260	30	124	240	256	222	4	60
MV2000/3-60	MV2000/36-60	140	190	17	416	80	229	260	30	124	240	256	222	4	60
MV2300/3-60	MV2300/36-60	140	190	17	416	80	229	260	30	124	240	256	222	4	60
MV3200/3-75	MV3200/36-75	155	255	25	518	105	302	314	35	147	285	308	265	4	75
MV4000/3-75	MV4000/36-75	155	255	25	518	105	302	314	35	147	285	308	265	4	75
MV5000/3-75	MV5000/36-75	155	255	25	518	105	302	314	35	147	285	308	265	4	75
MV6500/3-85	MV6500/36-85	200	320	28	611	122	387	402	40	203	394	367	378	4	85
MV9000/3-85	MV9000/36-85	200	320	28	611	122	387	402	40	203	394	367	378	4	85
MV6500/3-86	MV6500/36-86	200	320	28	611	122	387	402	40	203	394	367	378	4	86
MV9000/3-86	MV9000/36-86	200	320	28	611	122	387	402	40	203	394	367	378	4	86

MV Standard R range

4 Poles 1500/1800 RPM



Frame 40

Frame 50

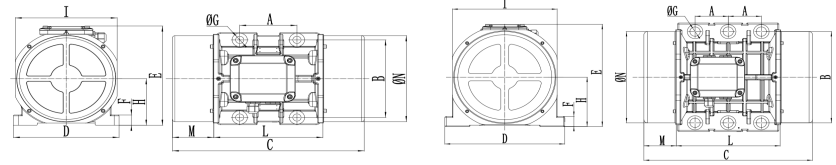
Wm (kgcm)		Model		Centrifugal Force (Kg)		Weight (Kg)	Input Power (kW)		Standard Nominal Current (A)		*Terminal Connection	Ia/In		Cable Gland
50Hz	60Hz	50Hz	60Hz	50Hz	60Hz	50Hz-60Hz	50Hz	60Hz	50Hz (400V)	60Hz (460V)		50Hz	60Hz	
2	2	MV40/15-10	MV40/18-10	25	36	5	0.05	0.04	0.31	0.31	Y	2.2	2.2	M16
6	4.2	MV90/15-20	MV90/18-20	75	76	7	0.07	0.08	0.31	0.39	Y	2.2	2.2	M20
7.7	5.4	MV100/15-20	MV100/18-20	97	98	7	0.07	0.08	0.31	0.39	Y	2.2	2.2	M20
15.4	10.8	MV200/15-30	MV200/18-30	194	196	12	0.12	0.15	0.49	0.50	Y	2.2	2.2	M20
26.6	16.8	MV300/15-30	MV300/18-30	305	308	13.5	0.25	0.28	0.62	0.70	Y	2.2	2.2	M20
33.4	23.4	MV400/15-40	MV400/18-40	420	423	20	0.27	0.32	0.84	0.86	Y	2.7	2.7	M20
40.1	28.1	MV500/15-40	MV500/18-40	504	508	21	0.35	0.40	1.06	1.09	Y	3	2.9	M20
56.8	39.4	MV700/15-50	MV700/18-50	714	712	27	0.62	0.73	1.32	1.38	Y	3.2	3.4	M20
56.8	39.4	MV800/15-50	MV800/18-50	807	796	29.5	0.68	0.78	1.36	1.45	Y	3.3	3.38	M20
75.6	52.9	MV950/15-50	MV950/18-50	950	957	33	0.64	0.77	1.40	1.35	Y	4.2	4.2	M20
87.7	61.4	MV1100/15-50	MV1100/18-50	1102	1110	35	0.64	0.77	1.40	1.35	Y	4	4	M20
108.6	76.7	MV1400/15-60	MV1400/18-60	1364	1388	63.5	0.70	0.84	1.78	1.83	Y	4.2	4.2	M25
137.3	92	MV1700/15-60	MV1700/18-60	1725	1664	67.5	1.13	1.30	2.16	2.26	Y	4.9	4.7	M25
187.7	137.4	MV2400/15-60	MV2400/18-60	2358	2485	77	1.57	1.88	3.20	3.30	Y	5.1	5.1	M25
203.5	135.6	MV2500/15-70	MV2500/18-70	2557	2454	85	1.76	2.00	3.08	3.15	Y	6.2	6.3	M25
248.7	169.8	MV3000/15-70	MV3000/18-70	3124	3071	83.5	1.90	2.30	3.68	3.75	Y	6.7	6.8	M25
306.7	204.7	MV3800/15-75	MV3800/18-75	3853	3704	125	2.20	2.60	4.15	4.20	Y	7	7	M32
343.2	240.7	MV4300/15-75	MV4300/18-75	4312	4359	136	2.50	3.00	4.50	4.60	Y	7.2	7.4	M32
437.4	303.7	MV5500/15-80	MV5500/18-80	5495	5495	181	2.88	3.45	6.50	6.60	Y	7.3	7.2	M32
576.8	397.3	MV7200/15-85	MV7200/18-85	7246	7200	237	4.00	5.00	8.50	8.70	Δ	7	7.1	M32
718	498.8	MV9000/15-85	MV9000/18-85	9020	9023	252	7.35	8.50	13.40	13.60	Δ	7.2	7.2	M32
580	406.0	MV7200/15-86	MV7200/18-86	7286	7345	237	6.00	6.50	11.00	10.80	Δ	4.7	4.5	M32
725	507.0	MV9000/15-86	MV9000/18-86	9106	9172	252	6.00	6.50	11.00	10.80	Δ	4.7	4.5	M32
800.1	588.3	MV10000/15-90	MV10000/18-90	10052	10643	300	5.40	7.00	13.00	13.20	Δ	6.7	6.6	M32
835.7	581.3	MV10000/15-91	MV10000/18-91	10499	10517	300	7.00	8.20	13.10	13.10	Δ	7.2	7.7	M32
939	655	MV11500/15-100	MV11500/18-100	11779	11853	445	9.00	10.00	15.50	15.80	Δ	7	7.0	M32
1142	838	MV14500/15-100	MV14500/18-100	14352	15153	460	11.00	13.00	18.50	18.90	Δ	8	8	M32

Model		A	B	ΦG	C	M	D	E	F	H	I	L	N	Ho/les n°	Size
50Hz	60Hz	Multiple Footprint			50Hz-60Hz	50Hz-60Hz									
MV40/15-10	MV40/18-10	62-74 106 10 93 83-102 10			213	45	130	135	12	50	96	107	85	4	10
MV90/15-20	MV90/18-20	62-74	106	9	233	54	130	154	15	65	125	120	112	4	20
MV100/15-20	MV100/18-20	62-74	106	9	233	54	130	154	15	65	125	120	112	4	20
MV200/15-30	MV200/18-30	Multiple Footprint			276	58	155	173	19	79	140	160	131	4	30
MV300/15-30	MV300/18-30	Multiple Footprint			300	70	155	173	19	79	140	160	131	4	50
MV400/15-40	MV400/18-40	105	140	13	334	78	168	196	22	92	174	178	160	4	40
MV500/15-40	MV500/18-40	105	140	13	334	78	168	196	22	92	174	178	160	4	40
MV700/15-50	MV700/18-50	120	170	17	391	93	208	210	22	96	185	205	170	4	50
MV800/15-50	MV800/18-50	120	170	17	391	93	208	210	22	96	185	205	170	4	50
MV950/15-50	MV950/18-50	120	170	17	451	123	208	210	22	96	185	205	170	4	50
MV1100/15-50	MV1100/18-50	120	170	17	451	123	208	210	22	96	185	205	170	4	50
MV1400/15-60	MV1400/18-60	140	190	17	460	102	230	260	30	124	240	256	222	4	60
MV1700/15-60	MV1700/18-60	140	190	17	460	102	230	260	30	124	240	256	222	4	60
MV2400/15-60	MV2400/18-60	140	190	17	514	129	230	260	30	124	240	256	222	4	60
MV2500/15-70	MV2500/18-70	155	225	22	501	114	275	290	40	140	256	273	236	4	70
MV3000/15-70	MV3000/18-70	155	225	22	553	140	275	290	40	140	256	273	236	4	70
MV3800/15-75	MV3800/18-75	155	255	23.5	588	140	304	314	45	147	285	308	265	4	75
MV4300/15-75	MV4300/18-75	155	255	23.5	588	140	304	314	45	147	285	308	265	4	75
MV5500/15-80	MV5500/18-80	180	280	26	603	130	332	360	37	167	345	343	310	4	80
MV7200/15-85	MV7200/18-85	200	320	28	624	130	385	402	40	203	394	360	378	4	85
MV9000/15-85	MV9000/18-85	200	320	28	611	122	385	402	40	203	394	367	378	4	85
MV7200/15-86	MV7200/18-86	200	320	28	611	122	385	402	40	203	394	367	378	4	86
MV9000/15-86	MV9000/18-86	200	320	28	611	122	385	402	40	203	394	367	378	4	86
MV10000/15-90	MV10000/18-90	125	380	39	728	170	452	415	40	205	394	388	378	6	90
MV10000/15-91	MV10000/18-91	125	380	39	728	170	452	415	40	205	394	388	378	6	91
MV11500/15-100	MV11500/18-100	140	440	45	890	210	530	484	37	232	446	470	424	6	100
MV14500/15-100	MV14500/18-100	140	440	45	890	210	530	484	37	232	446	470	424	6	100

MV Standard Range 6

*Terminal Connections: Y High Voltage; Δ Low Voltage

Poles 1000/1200 RPM



Frame 60/70/75/80/85

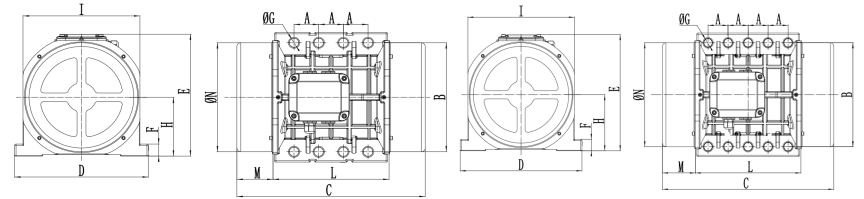
Frame 90/100

Wm (kgcm)		Model		Centrifugal Force (Kg)		Weight (Kg)	Input Power (kW)		Standard Nominal Current (A)		Terminal Connection	Ia/In		Cable Gland
50Hz	60Hz	50Hz	60Hz	50Hz	60Hz	50Hz-60Hz	50Hz	60Hz	50Hz (400V)	60Hz (460V)		50Hz	60Hz	
9.5	6.6	MV50/1-30	MV50/12-30	53	53	10	0.12	0.14	0.3	0.40	Y	2.2	2.2	M20
18.8	13.2	MV100/1-30	MV100/12-30	105	106	11	0.12	0.14	0.3	0.40	Y	2.2	2.2	M20
33.5	23.4	MV200/1-40	MV200/12-40	187	188	19	0.15	0.18	0.65	0.68	Y	2.2	2.2	M20
56.9	39.9	MV300/1-50	MV300/12-50	318	320	26	0.25	0.3	0.67	0.70	Y	2.7	2.7	M20
91.9	64.3	MV500/1-50	MV500/12-50	513	517	34	0.55	0.4	1.22	1.32	Y	3	2.9	M20
137.4	108.6	MV800/1-60	MV800/12-60	767	873	60	0.75	0.8	1.42	1.52	Y	3.4	3.3	M25
187.7	137.3	MV1100/1-60	MV1100/12-60	1048	1104	78	0.75	0.8	1.42	1.52	Y	3.4	3.3	M25
284.8	196.5	MV1500/1-60	MV1500/12-60	1590	1580	84	0.9	1.08	1.8	2.00	Y	3.5	3.5	M25
288.0	201.0	MV1600/1-60	MV1600/12-60	1601	1598	88	0.9	1.08	2.2	2.30	Y	3.7	3.6	M25
299.6	203.5	MV1620/1-70	MV1620/12-70	1673	1636	90	0.9	1.08	2.4	2.50	Y	3.9	3.8	M25
373.1	248.7	MV2100/1-70	MV2100/12-70	2083	2000	105	1.5	1.8	3	3.20	Y	4.5	4.6	M25
467.4	306.7	MV2600/1-75	MV2600/12-75	2610	2466	146.5	1.96	2.1	4.1	4.30	Y	5	5	M32
540.3	379.7	MV3000/1-75	MV3000/12-75	3017	3053	155	2.2	2.4	4.5	4.63	Y	5.2	5.2	M32
702.5	465.6	MV3700/1-75	MV3700/12-75	3797	3744	159	2.2	2.4	4.50	4.6	Y	5.2	5.2	M32
680.4	437.4	MV3800/1-80	MV3800/12-80	3799	3517	216	2.5	3	5.5	5.60	Y	6.1	6.2	M32
838.3	584.2	MV4700/1-80	MV4700/12-80	4681	4697	220	3.2	3.9	6.5	6.65	Y	5.7	5.9	M32
936.4	661.0	MV5200/1-80	MV5200/12-85	5228	5228	236	3.2	3.7	6.5	6.90	Y	5.7	5.9	M32
929.9	654.6	MV5200/1-85	MV5200/12-85	5192	5263	264	3.8	4	6.92	6.01	Δ	5.7	5.7	M32
1165.2	824	MV6500/1-85	MV6500/12-85	6506	6625	288	4.3	5	7.76	7.86	Δ	6.4	6.2	M32
1436	929.8	MV8000/1-85	MV8000/12-85	8018	7476	309	5.5	6	12.6	13.00	Δ	6.2	6.4	M32
1598	1165.2	MV9000/1-85	MV9000/12-85	9098	9000	333	5.8	6.2	9	10.00	Δ	6	6.2	M32
1600	1165.2	MV8000/1-86	MV8000/12-86	8936	9369	322	6.2	7.45	13.2	12.60	Δ	6.5	6.4	M32
1434	929.8	MV9000/1-86	MV9000/12-86	8007	7476	309	4.6	5.5	9	10.00	Δ	6	6.2	M32
1788.4	1240	MV10000/1-90	MV10000/12-90	9986	9970	374	6.1	6.4	14	14.50	Δ	6.6	6.6	M32
2329.8	1647.4	MV13000/1-90	MV13000/12-90	13009	13246	411	7.5	8.3	16.4	17.00	Δ	6.4	6.5	M32
1802.9	1240.0	MV10000/1-91	MV10000/12-91	10067	9970	373	6.4	7.7	13	14.00	Δ	6	6	M32
2056.9	1433.0	MV11400/1-91	MV11400/12-91	11485	11522	404	6.4	7.7	13	14.50	Δ	6	6	M32
2311.0	1647.4	MV13000/1-91	MV13000/12-91	12904	13246	411	8	8.9	17.2	18.10	Δ	5.6	6.3	M32
2253.0	1550.0	MV12000/1-100	MV12000/12-100	12580	12466	522	8	9.5	15	15.00	Δ	5	5.5	M32
2634	1856	MV15000/1-105	MV15000/12-105	14706	14923	672	10.1	12	18	18.00	Δ	5.8	5.8	M32
3220	2147	MV17500/1-105	MV17500/12-105	17980	17264	744	11.9	14.2	21	21.00	Δ	5.6	5.9	M32
3632	2525	MV19500/1-105	MV19500/12-105	20285	20299	768	12	14.5	24	24.00	Δ	5.4	5.6	M32
4067	2622	MV22000/1-110	MV22000/12-110	22711	21079	916	13.9	17	28	28.00	Δ	4.8	5.3	M32
4572	3163	MV25000/1-110	MV25000/12-110	25532	25432	994	13.9	17	28	28.00	Δ	4.8	5.3	M32

Model		A	B	ΦG	C	M	D	E	F	H	I	L	N	n°	Size
50Hz	60Hz	50Hz-60Hz		50Hz-60Hz		50Hz-60Hz		50Hz-60Hz		50Hz-60Hz		50Hz-60Hz		50Hz-60Hz	
MV50/1-30	MV50/12-30	Multiple Footprint 80 110 11 90 125 13 124 110 11 135 115 12			279	58	155	173	19	79	150	160	134	4	30
MV100/1-30	MV100/12-30	Multiple Footprint 80 110 11 90 125 13 124 110 11 135 115 12			300	70	155	173	19	79	150	160	134	4	30
MV200/1-40	MV200/12-40	105	140	13	334	78	168	196	22	92	174	178	160	4	40
MV300/1-50	MV300/12-50	120	170	17	391	93	208	210	22	96	185	205	170	4	50
MV500/1-50	MV500/12-50	120	170	17	451	123	208	210	22	96	185	205	170	4	50
MV800/1-60	MV800/12-60	140	190	17	460	102	229	260	30	124	240	256	222	4	60
MV1100/1-60	MV1100/12-60	140	190	17	514	129	229	260	30	124	240	256	222	4	60
MV1500/1-60	MV1500/12-60	140	190	17	580	162	229	260	30	124	240	256	222	4	60
MV1600/1-60	MV1600/12-60	140	190	17	580	162	229	260	30	124	240	256	222	4	60
MV1620/1-70	MV1620/12-70	155	225	22	553	140	272	290	40	140	256	273	236	4	70
MV2100/1-70	MV2100/12-70	155	225	22	613	170	272	290	40	140	256	273	236	4	70
MV2600/1-75	MV2600/12-75	155	255	23.5	648	170	302	314	35	147	285	308	265	4	75
MV3000/1-75	MV3000/12-75	155	255	23.5	648	170	302	314	35	147	285	308	265	4	75
MV3700/1-75	MV3700/12-75	155	255	23.5	648	170	302	314	35	147	285	308	265	4	75
MV3800/1-80	MV3800/12-80	180	280	26	683	170	332	354	37	170	330	343	311	4	80
MV4700/1-80	MV4700/12-80	180	280	26	733	195	332	354	37	170	330	343	311	4	80
MV5200/1-80	MV5200/12-85	200	320	28	691	162	387	402	40	203	394	367	378	4	80
MV5200/1-85	MV5200/12-85	200	320	28	691	162	387	402	40	203	394	367	378	4	85
MV6500/1-85	MV6500/12-85	200	320	28	691	162	387	402	40	203	394	367	378	4	85
MV8000/1-85	MV8000/12-85	200	320	28	791	212	387	402	40	203	394	367	378	4	85
MV9000/1-85	MV9000/12-85	200	320	28	791	212	387	402	40	203	394	367	378	4	85
MV8000/1-86	MV8000/12-86	200	320	28	791	212	387	402	40	203	394	367	378	4	86
MV9000/1-86	MV9000/12-86	200	320	28	791	212	387	402	40	203	394	367	378	4	86
MV10000/1-90	MV10000/12-90	125	380	39	908	260	452	415	40	205	394	388	378	6	90
MV13000/1-90	MV13000/12-90	125	380	39	948	280	452	415	40	205	394	388	378	6	90
MV10000/1-91	MV10000/12-91	125	380	39	948	280	452	415	40	205	394	388	378	6	91
MV11400/1-91	MV11400/12-91	125	380	39	948	280	452	415	40	205	394	388	378	6	91
MV13000/1-91	MV13000/12-91	125	380	39	948	280	452	415	40	205	394	388	378	6	91
MV12000/1-100	MV12000/12-100	140	440	45	1020	275	452	415	40	205	394	388	378	6	100
MV15000/1-105	MV15000/12-105	140	480	45	980	210	570	542	48	268	510	560	490	8	105
MV17500/1-105	MV17500/12-105	140	480	45	1060	250	570	542	48	268	510	560	490	8	105
MV19500/1-105	MV19500/12-105	140	480	45	1060	250	570	542	48	268	510	560	490	8	105
MV22000/1-110	MV22000/12-110	140	520	45	1130	285	610	594	42	297	560	560	530	8	110
MV25000/1-110	MV25000/12-110	140	520	45	1130	285	610	594	42	297	560	560	530	8	110

MV Standard Range

8 Poles 750/900 RPM



Frame 105/110/120

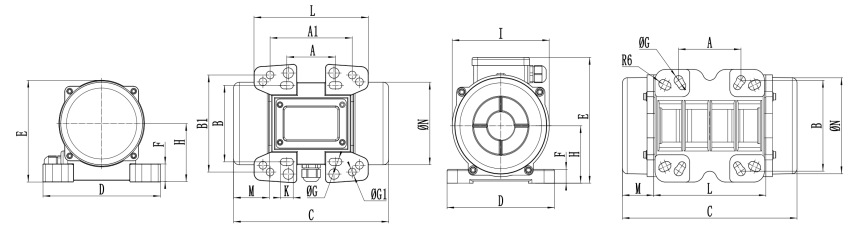
Frame 130

Wm (kgcm)		Model		Centrifugal Force (Kg)		Weight (Kg)	Input Power (kW)		Standard Nominal Current (A)		*Terminal Connection	Ia/In		Cable Gland
50Hz	60Hz	50Hz	60Hz	50Hz	60Hz	50Hz-60Hz	50Hz	60Hz	50Hz (400V)	60Hz (460V)		50Hz	60Hz	
33.4		MV150/075-40	MV150/090-40	105	151	21	0.23	0.25	1.14	1.14	Y	1.7	1.7	M20
56.9		MV250/075-50	MV250/090-50	179	257	29	0.25	0.3	0.9	0.89	Y	1.9	1.9	M20
84.0		MV400/075-50	MV400/090-50	264	380	34	0.25	0.3	0.9	0.89	Y	2.1	2.1	M20
137.3		MV650/075-60	MV650/090-60	431	621	63	0.37	0.45	1.2	1.20	Y	2.4	2.4	M25
187.7		MV900/075-60	MV900/090-60	589	849	70	0.55	0.54	1.23	1.29	Y	2.7	2.7	M25
299.6		MV1300/075-70	MV1300/090-70	941	1355	90	0.75	0.9	2.2	2.20	Y	3.2	3.2	M25
467.4		MV2100/075-75	MV2100/090-75	1468	2114	150	1	1.2	2.81	2.89	Y	4.4	4.3	M32
680.3		MV3100/075-80	MV3100/090-80	2137	3077	201	2	2.3	4.5	4.40	Y	4.2	4.2	M32
838.4		MV3800/075-80	MV3800/090-80	2633	3792	219	2.5	3	6	6.00	Y	4.1	4.2	M32
929.7		MV4200/075-85	MV4200/090-85	2920	47205	268	2.9	3.4	6.5	6.50	△	4	3.9	M32
1165.2		MV5300/075-85	MV5300/090-85	3660	5270	289	3.7	4.3	8	8.20	△	4	4.4	M32
1435.9		MV6500/075-85	MV6500/090-85	4510	6494	308	3.8	4.2	8.78	8.30	△	3.8	4.2	M32
2200.4		MV10000/075-90	MV10000/090-90	6911	9952	422	6.8	7.5	13.5	12.50	△	3.7	4.4	M32
2311.0		MV10000/075-91	MV10000/090-91	7258	10452	422	6	7	14.4	14.00	△	4.7	4.7	M32
2835	2553	MV12000/075-100	MV12000/090-100	8904	11546	571	7.5	8	13.5	13.50	△	3.8	4	M32
3713	3220	MV14000/075-105	MV14000/090-105	11661	14563	751	9	10.6	19	19.00	△	4.5	5	M32
4401	3920	MV17000/075-105	MV17000/090-105	13822	17729	812	9.1	11	20	20.00	△	5.3	5.8	M32
5857	4999	MV22000/075-110	MV22000/090-110	18395	22610	982	13.8	16.5	28	28.00	△	5.6	5.2	M32
6662	5857	MV26000/075-110	MV26000/090-110	20924	26489	1016	13.8	16.5	28	28.00	△	5.6	5.2	M32

Model		A	B	ΦG	C	M	D	E	F	H	I	L	N	Holes n°	Size
50Hz	60Hz				50Hz-60Hz	50Hz-60Hz									
MV150/075-40	MV150/090-40	105	140	13	334	78	170	196	22	92	174	178	160	4	40
MV250/075-50	MV250/090-50	120	170	17	391	93	208	210	22	96	185	205	170	4	50
MV400/075-50	MV400/090-50	120	170	17	451	123	208	210	22	94	180	205	170	4	50
MV650/075-60	MV650/090-60	140	190	17	460	102	229	260	30	124	240	256	222	4	60
MV900/075-60	MV900/090-60	140	190	17	514	129	229	260	30	124	240	256	222	4	60
MV1300/075-70	MV1300/090-70	155	225	22	553	140	272	290	40	140	256	273	236	4	70
MV2100/075-75	MV2100/090-75	155	255	23.5	648	170	302	314	35	147	285	308	265	4	75
MV3100/075-80	MV3100/090-80	180	280	26	683	170	332	354	37	170	330	343	311	4	80
MV3800/075-80	MV3800/090-80	180	280	26	733	195	332	354	37	170	330	343	311	4	80
MV4200/075-85	MV4200/090-85	200	320	28	691	162	387	402	40	203	394	367	378	4	85
MV5300/075-85	MV5300/090-85	200	320	28	691	162	387	402	40	203	394	367	378	4	85
MV6500/075-85	MV6500/090-85	200	320	28	791	212	387	402	40	203	394	367	378	4	85
MV10000/075-90	MV10000/090-90	125	380	39	948	280	452	415	40	205	394	388	378	6	90
MV10000/075-91	MV10000/090-91	125	380	39	948	280	452	415	40	205	394	388	378	6	91
MV12000/075-100	MV12000/090-100	140	440	45	1020	275	530	484	37	232	446	470	424	6	100
MV14000/075-105	MV14000/090-105	140	480	45	1060	250	570	542	48	268	510	560	490	8	105
MV17000/075-105	MV17000/090-105	140	480	45	1120	280	570	542	48	268	510	560	490	8	105
MV22000/075-110	MV22000/090-110	140	520	45	1130	285	610	594	42	297	560	560	530	8	110
MV26000/075-110	MV26000/090-110	140	520	45	1130	285	610	594	42	297	560	560	530	8	110

MV Standard Range

2 Poles Single Phase 3000/3600 RPM



Frame 23

Frame 30

Wm (kgcm)		Model		Centrifugal Force (Kg)		Weight (Kg)	Input Power (kW)		Nominal Current A max		Cable Gland	Capacitor	
50Hz	60Hz	50Hz	60Hz	50Hz	60Hz	50Hz-60Hz	50Hz	60Hz	50Hz (230V)	60Hz (115V)	Metric	50Hz (230V)	60Hz (115V)
1.3	1.0	MV60/3M-10	MV60/36M-10	66	71	4	0.08	0.09	0.43	1.03	M16	4	6
2.0	1.3	MV100/3M-10	MV100/36M-10	98	95	5	0.1	0.11	0.54	1.3	M16	4	6
3.7	2.6	MV200/3M-20	MV200/36M-20	187	189	7	0.18	0.21	1.14	2.62	M20	8	6
3.7	2.6	MV200/3M-23	MV200/36M-23	187	189	7	0.18	0.21	1.14	2.62	M20	8	6
6.4	4.5	MV300/3M-30	MV300/36M-30	321	323	13	0.27	0.28	1.58	3.43	M20	10	15
6.6	4.7	MV400/3M-30	MV400/36M-30	400	403	13	0.3	0.32	1.68	1.76	M20	10	15

Model		A	B	ΦG	C		M	D	E	F	H	I	L	N	Holes	Size
50Hz	60Hz				50Hz-60Hz	50Hz-60Hz									n°	
MV60/3M-10	MV60/36M-10	Multiple Footprint 62-74 106 10 33 83-102 10			213	45	130	135	11	50	96	107	85	4	10	
MV100/3M-10	MV100/36M-10	Multiple Footprint 62-74 106 10 33 83-102 10			213	45	130	135	11	50	96	107	85	4	210	
MV200/3M-20	MV200/36M-20	62-74	106	9	233	54	131	154	15	65	125	120	112	4	20	
MV200/3M-23	MV200/36M-23	Multiple Footprint 62-74 106 11 65 140 14.5 115.5 135 11 134.5 115 11			217	50	165	141	25	82	116	160	120	4	23	
MV300/3M-30	MV300/36M-30	Multiple Footprint 80 110 11 90 125 13 124 110 11 135 115 12			250	45	155	173	19	79	150	160	132	4	30	
MV400/3M-30	MV400/36M-30	Multiple Footprint 80 110 11 90 125 13 124 110 11 135 115 12			276	58	155	173	19	79	142	160	132	4	30	